

## Hot chucks/heated work holders

with external controller, temperature up to 350 °C



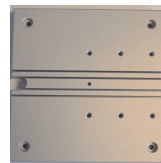
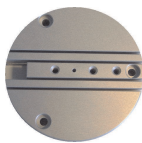
- Precisely working hot chucks/heated work holders for usage in laboratories for small production or pre-series production
- Sample fixture either by means of mechanical clamp and/or vacuum (no pump included)
- From ambient temperature up to 350 °C (depending on model; max. temperature suitable for continuous operation)
- Height adjustable 66-78 mm
- Various top plates as options (T03, T05/T08, DIL)
- Waffle pack holder (optional)

## Technical Data hot chucks with external controller:



Model	HP-60	HPR-90	HP-100	HP-150	HP-200
Heated Area	60 mm ø	90 mm ø	100 x 100 mm	100 x 150 mm	200 x 150 mm
Rotatability	-	<b>360° rotary</b>	-	-	-
Max. temp. optional	250 °C	250 °C	250 °C 350 °C	250 °C	250 °C
Height adjustable	66 - 78 mm	66 - 78 mm	66 - 78 mm	66 - 78 mm	66 - 78 mm
Part fixture	mechanical or by vacuum	mechanical or by vacuum	mechanical or by vacuum	mechanical or by vacuum	mechanical or by vacuum
Power supply	40 V, 80 W	40 V, 160 W	230 V, 400 W	230 V, 800 W	230 V, 1500 W
Weight	0,6 kg	0,7 kg	1,2 kg	1,4 kg	3,6 kg
Optional:	wafflepack holder				

Different top plates

for DIL, T05 or T08 housing



External heat controller for heated work holders/hot chucks:

Model	HC-40	HC-240
		
Power supply	230 V, 50-60 Hz	230 V, 50-60 Hz
Controller	Eurotherm 2132	Eurotherm 2132
Temperature range	up to 350 °C	up to 350 °C
Outlet	40 V, 160 W	230 V, 2000 W
Dimensions	145 x 136 x 50 mm	145 x 136 x 50 mm
Weight	1,3 kg	0,5 kg

Model	HC-40-2416	HC-240-2416
-------	------------	-------------



Power supply	230 V, 50-60 Hz	230 V, 50-60 Hz
Controller	Eurotherm 2416 incl. USB interface and UniSoft software	Eurotherm 2416 incl. USB interface and UniSoft software
Temperature range	up to 350 °C	up to 350 °C
Outlet	40 V, 160 W	230 V, 2000 W
Dimensions	145 x 136 x 50 mm	145 x 136 x 50 mm
Weight	1,3 kg	0,5 kg